

Outreach Ministries
Episcopal Church of the Resurrection
Blue Springs, MO



Episcopal Church of the Resurrection
1433 NW R.D. Mize Rd.
Blue Springs, MO 64015
816-228-4220

Necessity Pantry

Contact Person: Ina Lewis/All parishioners

The Necessity Pantry is a joint ministry of the Episcopal churches in eastern Jackson County. It is based at St. Michael's in Independence. The pantry serves approximately 150-200 families who need assistance with food, personal hygiene items, clothing and household supplies.

Ways you can help:

- **Donations and cash contributions are collected the 3rd Sunday of each month. We list 'most needed' items in the weekly email.**
- **Volunteer to deliver donations to St. Michaels.**
- **Volunteer at St. Michaels to help distribute donations to those in need. Hours to help at St. Michaels are:**

Every Tuesday – there are two shifts: 1-3 & 3-5 p.m.

The Pantry is open the 2nd Tuesday from 4-6 p.m.

3rd Saturday of the month from 10-12 noon



**Feeding the
Community**

Back Snack

Contact Person: Pat Carle

Church of the Resurrection was the first church in our area to participate in this program. We provide sacks with nutritional food to approximately 30 students at Thomas Ultican Elementary each week.

Ways you can help:

- **Donate money to help buy the fresh fruit that we put in each sack. Donation container is on the desk where you pick up your church bulletin. You may also put donation in collection plate.**
- **Volunteer to help set up for weekly packing**
- **Volunteer to purchase the fruit that is added to each bag.**
- **Volunteer to deliver the bins of sacks to Thomas Ultican. This is usually done on a Friday and takes less than an hour. It does require a truck to carry the three bins.**



Nourish Kansas City

Contact Person: Annie Scott

We volunteer to help plate food two times each month. We volunteer the 1st and 3rd Monday of each month. Nourish KC is located downtown KC, at 8th and Paseo. We serve a nutritious lunch to individuals and families who may be living in transitional housing or homeless.

Ways you can help:

We are signed up to help plate the meal for the guests who visit Nourish KC. We are down at the kitchen between 10:30-11 and usually finish about 2:30. The dates we are signed up is posted on the bulletin board by the front door. You will need to sign a waiver that will be given to Nourish KC. This can be done electronically or when you are at the kitchen. Our group name is Episcopal Church of the Resurrection. The group leader is Annie Scott



Blessing Bags

Contact Person: Annie Scott

How many times have you come to an intersection and noticed someone in need? The purpose of Blessing Bags is simple. They are stocked with items that will be beneficial to someone in need. The items in each bag can be easily opened (pull top lids) and provide nourishment to those who are in need of assistance. Blessing bags can be kept in your car, just waiting for the time you are able to assist someone in need.

We donate 100 Blessing Bags each year that are delivered to our Community Service League. They give them to Blue Springs Police Department to hand out as needed.

Ways you can help:

- **Donate items to be put in the Blessing Bags, such as pull top cans of soup, granola bars, white crew socks (new and gently used). Sock hats and gloves during the winter season, bandanas during the summer. Donations can be left on the table in the Outreach room downstairs. Please label for Blessing Bags on donation.**



Uplift

Contact Person: Annie Scott/Rich Conn

We have been preparing meals for Uplift for a couple years. Uplift is located at 15th and Prospect. We provide a meal for 60 people, twice each month. Rich provides a recipe to accommodate 60 people and we 'get cooking'. We meet the second and third Monday of each month, at church, around noon. The meals are delivered to Uplift at 4:30 the same afternoon and are served to the homeless that evening.

Ways you can help:

- **Volunteer to help prepare the meal. The information sheet is on the bulletin board by the front door. We start around noon and usually finish by 2 p.m.**
- **Volunteer to deliver the meal to Uplift. The meal we prepare needs to be delivered to Uplift between 4:30-5 p.m. Sign up is at the bottom of the same sheet to prepare the meal.**
- **Donate items to be taken to Uplift: candles (their light source), plastic bags (from grocery store). You can leave items in the Outreach room. Please mark that they are for Uplift.**



Community Service League

Contact Person: Annie Scott

We participate in several programs to benefit the Community Service League in Blue Springs, MO. During the Lenten season, the offerings from the Ecumenical services are designated for Community Service League. We collect school supplies to be distributed to CSL in August. The school supplies are passed out to children who are unable to purchase the supplies needed for school.

We collect gifts for CSL for Christmas, as well as volunteer to help at the Community Service League Christmas store. The 'Mitten Tree' provides warmth to many in need.

We also have volunteers to help sort canned goods that are collected by the Blue Springs School District the first week in October. The canned goods that are collected supply 6 months of food items for CSL.

Ways you can help:

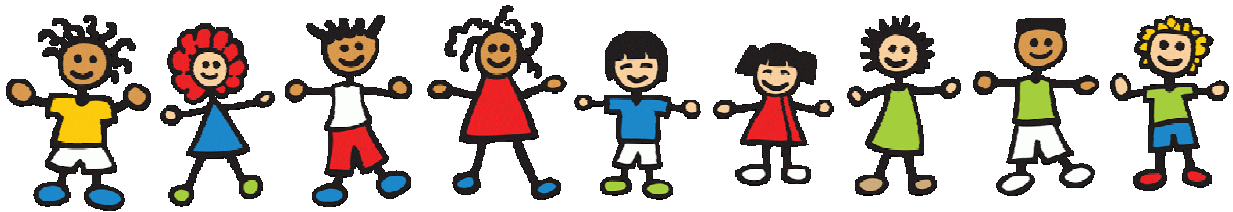
- **CSL needs volunteers on a weekly basis. Visit with Jim Whitaker, who volunteers each Wednesday.**
- **Sign up for the various activities throughout the year. If we are contacted by CSL requesting help, we get the word out through the weekly email.**



St. Francis Foundation – Care Portal

Contact Person: Arla Witte-Simpson

The Saint Francis Foundation is rooted in our Episcopal tradition. It has a long history of service to children and families. They are dedicated to the needs of struggling children and youth.



Friendship Manor and Woods Chapel Lodge

Contact Person: Rich Conn

We have provided several meals to these locations. We serve approximately 30-35 people at each location. This year we provided meals around Easter, Thanksgiving and Christmas. We need volunteers to help us serve and clean up.



Hope House

Contact Person: Rich Conn

We have provided some meal assistance to Hope House. We have taken some meals as well as some fruit.

WE are the many faces of Outreach.

Thank you for your generosity and the many ways you help.

If you have any new ideas, just let us know.

Outreach committee meets the first Sunday of the month at 9:15.

Come join us, we would love to have you!